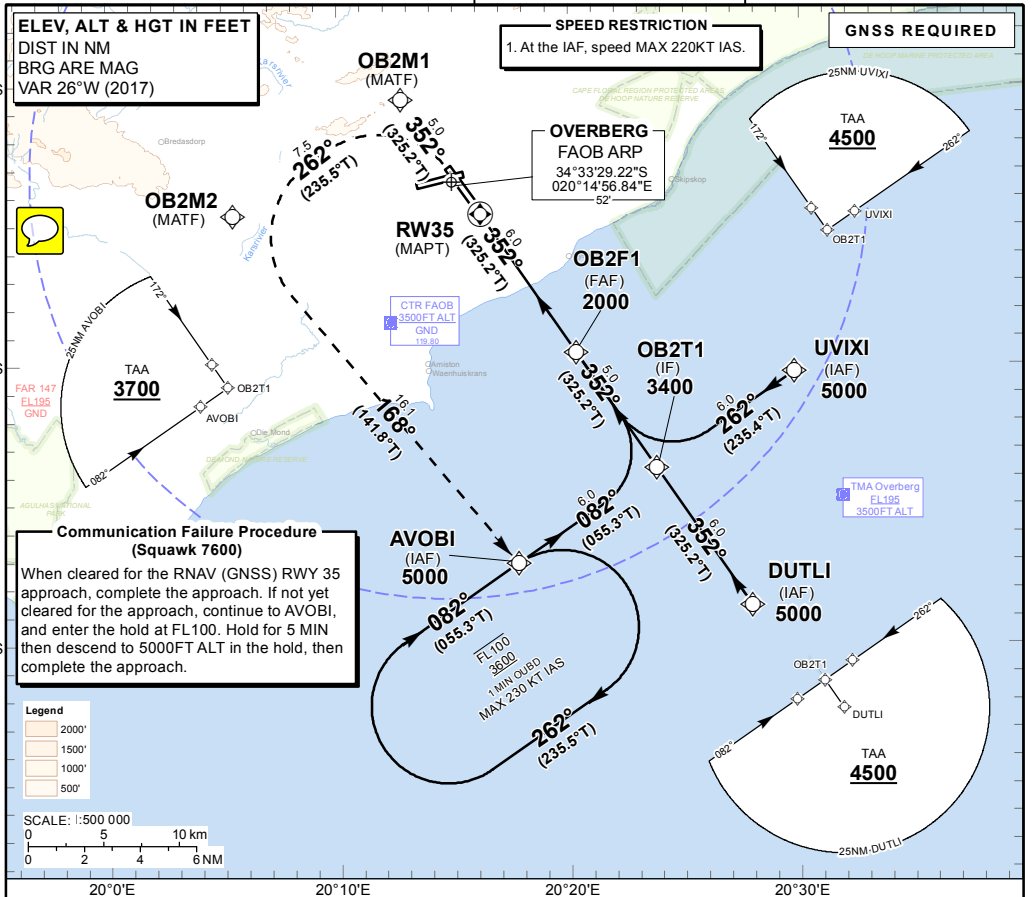


INSTRUMENT APPROACH CHART - ICAO

AERODROME ELEV 52'
 HEIGHTS RELATED TO THR RWY 35 - ELEV 37'

OVERBERG APP: 119.80
 TWR: 119.80
 GND: 119.80

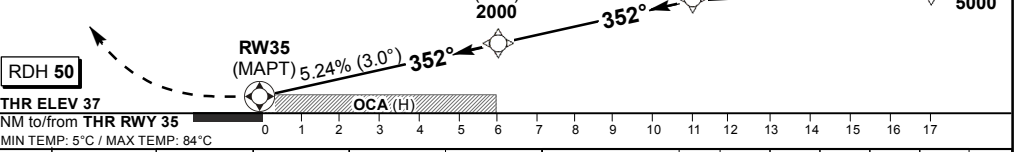
OVERBERG RNAV (GNSS) RWY 35 CAT A - D



DIST (NM) to RW35	6.0	5.0	4.0	3.0	2.0	
ADVISORY ALT(HGT)	2000 (1963)	1690 (1653)	1370 (1333)	1050 (1013)	730 (693)	

TRANSITION ALT 5000
TRANSITION LEVEL ATC

MISSED APPROACH:
 Climb to 3600FT ALT. Maintain RWY track to OB2M1. At OB2M1 turn left to OB2M2. At OB2M2 turn left to AVOBI, enter hold. MAX 230KT IAS.



THR ELEV 37		OCA (H)					GS														
NM to/from THR RWY 35		0	1	2	3	4	5	6	7	8	9	10	11	12	13	14	15	16	17		
MIN TEMP: 5°C / MAX TEMP: 84°C																					
Straight-in Approach	LNAV	2.5%	1040 (1003)	1040 (1003)	1040 (1003)	1040 (1003)	1040 (1003)	OB2F1 to RW35													
		3.1%	440 (403)	440 (403)	440 (403)	440 (403)	440 (403)	M:S	4:30	3:36	3:00	2:34	2:15	2:00							
	VNAV	2.5%	1020 (983)	1020 (983)	1020 (983)	1020 (983)	1020 (983)	Rate of descent													
		3.2%	390 (353)	390 (353)	390 (353)	390 (353)	390 (353)	FPM	425	531	638	744	850	957							
	RVR	1500m	1500m	1500m	1800m	2000m	NOTE:														
	ALS OUT	1500m	1500m	2000m	2000m	2000m	1. VNAV RoD is 5.24%. 2. Turns prior MAPT prohibited. 3. Approach Procedure speed restricted to MAX 220KT IAS. 4. No circling.														
Circling		NIL Circling																			

CHANGE: Heading - Communication Failure Procedure text Box